

# ELECTROLINE



## ELink Module EL-EMS Element

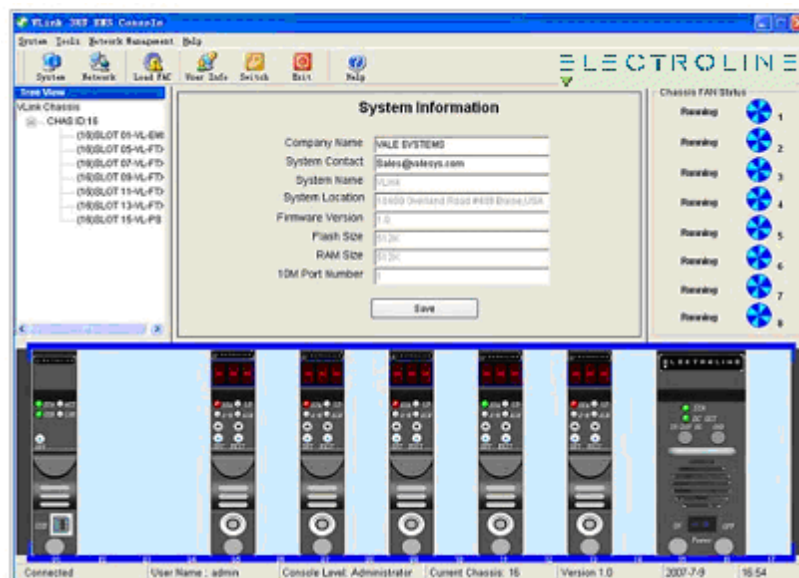
### Description

The EL-EMS management module is mounted in the first slot of the ELink Optical Platform to provide local monitoring and configuration, as well as remote management. The EL-EMS module is able to communicate with the rest of the modules via the chassis internal bus. There is a USB port for local craft access and an RJ45 Ethernet port for remote access by network management facilities. A Network Management Console Program (NMCP) is available for monitoring and configuration and provides a graphical user interface (GUI). The EL-EMS integrates the SNMP protocol and the SCTE-HMS-MIBs for remote access via a standard SNMP agent.



### Features

- Short circuit protection
- USB interface for local monitoring and setting
- RJ45 10Mbps Ethernet port for communication with SNMP based NMS
- LEDs to indicate data access activity
- Hot-swap design
- Firmware field upgradeable



# Specifications

Parameter	Unit	Specification	Note
<b>Communication Interface</b>			
USB port		USB B type	--
Ethernet port		RJ45, SNMP, 10Mbps manual	--
<b>Other</b>			
Operating temperature	°C	0 to 50	--
Storage temperature	°C	-40 to 70	--
Humidity	%	Max 85% , non-condensing	--
Dimensions	mm	395Dx14Wx128H	--
Weight	Kg	1	--
Power consumption	W	<5	--

**Note:** Specifications are subject to change without notice.

## Ordering Information:

Model Series
<b>EL-EMS</b>

**Corporate Headquarters**  
**Electroline Equipment Inc.**  
395 Lebeau Blvd.,  
Saint-Laurent Quebec H4N 1S2  
Canada

**Telephone**  
**North America** (800) 461-3344  
**Elsewhere** (514) 374-6335

**Fax**  
**Corporate / Ordering**  
(514) 374-2257

**General Inquiries**  
[info@electroline.com](mailto:info@electroline.com)  
**Technical Support**  
[support@electroline.com](mailto:support@electroline.com)